



Smart Door Lock Manual

Safety Precautions



This section contains important information to ensure the user's safety and prevent potential damage to property. Please, read this section carefully and use the product accordingly.

- The installation and repair should be done by the professional installer or service person.
- Do not install the product in the place where the gap between the door and the frame is 15 mm or more.
- Long-term exposure to direct sunlight may cause a crack on its touch pad. Avoid exposure to direct sunlight.
- Do not use the excessive force or sharp objects to push the lock buttons, as this can damage the product.
- Do not operate the product with wet hands, and keep liquids such as water or drinks away from the product, or the product may malfunction or be damaged.
- Do not use water, benzene or alcohol when cleaning the product, but use a soft dry cloth.
- Make sure that the door is completely closed when going outside.
- Make sure that no unauthorized person has the access to the password.

Change it regularly.

- Be sure to correctly match the battery polarities (+/-) when installing the batteries. Wrong direction of battery polarities may cause the battery liquid leakage or the burst of them.
- When the battery alarm melody is generated, please recharge the battery
- According to the wireless communication environment, its battery may consume much.
- Interference in wireless communication may occur when this product is used, or radio interference may occur from other devices.
- As this radio system may have radio interference during the operation, it cannot provide a service for human lives.
- Too much dew condensation may affect the performance of this product.

- ※ The information of this user manual is subject to change without any notices to improve the performance of this product.
- ※ Customer's improper installation may result in a additional service costs. We highly recommend professional installation.



Avoid sun



Avoid rain



Working temperature
-20°C - 60°C



Working humidity
20% - 60%

Product Specifications



Quiescent Current
< 50 microampere

Working current
0.5-2 A

Number of fingerprints stored
≤300

Number of passwords stored
≤300

Resolution
500 DPI

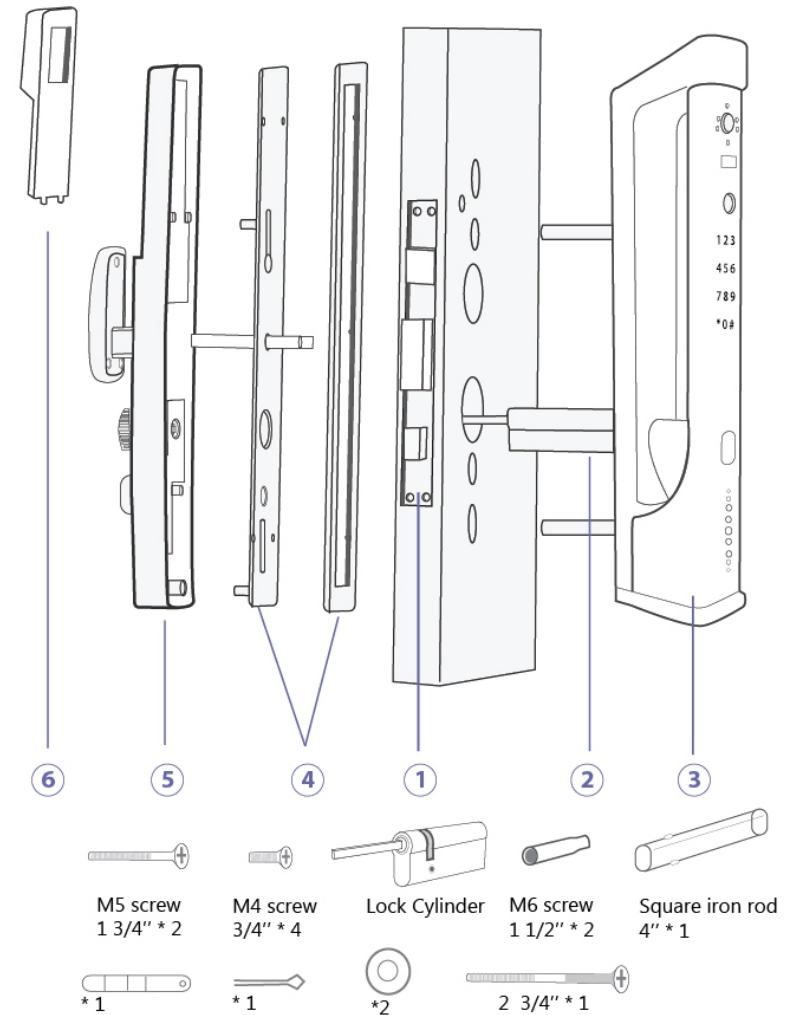
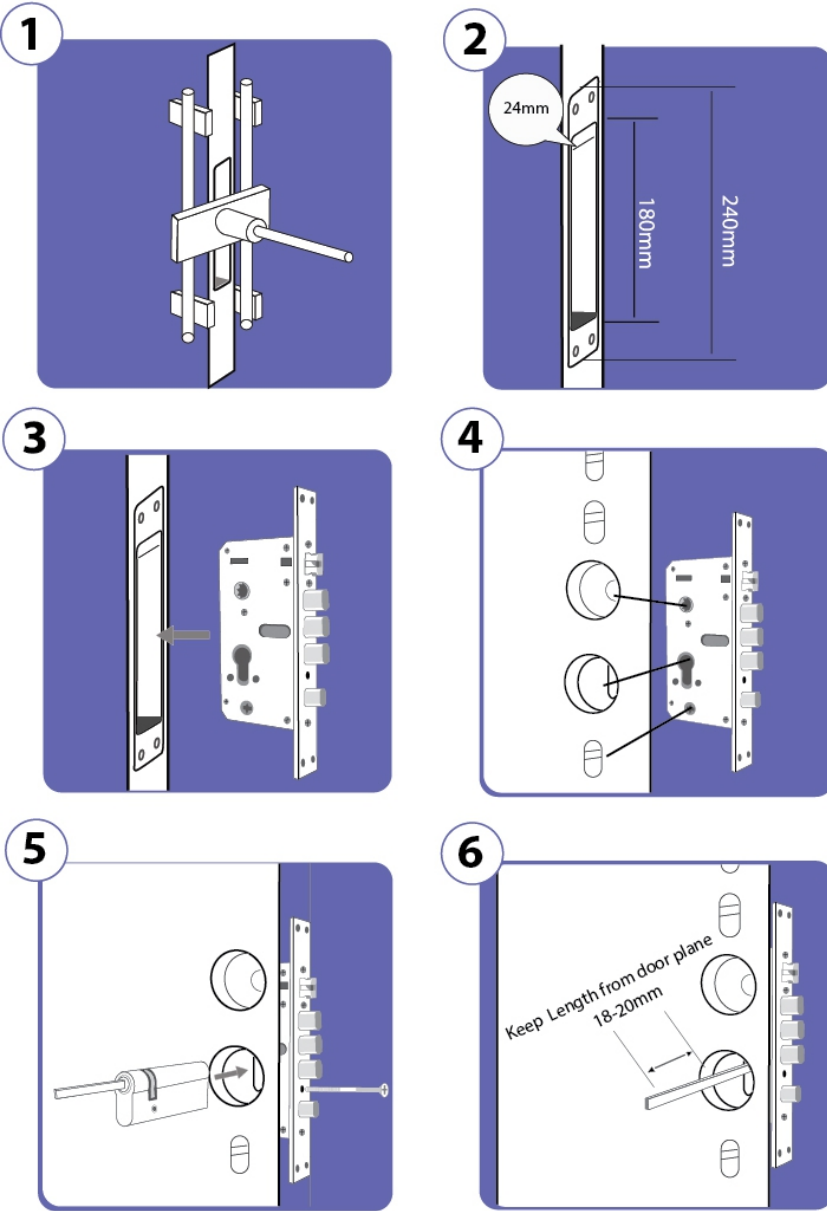
Rejection rate
≤0.15%

False acceptance rate
≤0.00004%

Working humidity
20% - 90%

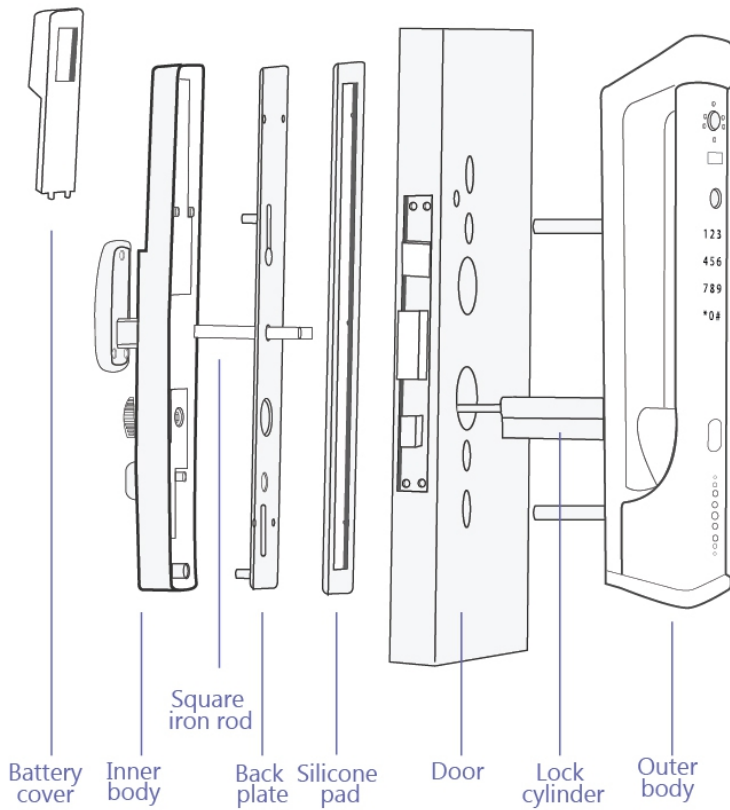
Lithium battery voltage
8.4V 4200mh

Smart Lock Installation Manual



1. Install the lock body first,
2. Install the lock cylinder, ensure that the steel bar of the lock core shaft faces the room, and the length is: 18-20 mm from the door panel.
3. Install the outer panel
4. Install the back panel and silicone pad, fix with M5 screws
5. Connect the inner panel data cable, fix inner panel on the door with M4 screws
6. Install the lithium battery, install the battery cover, the installation is complete

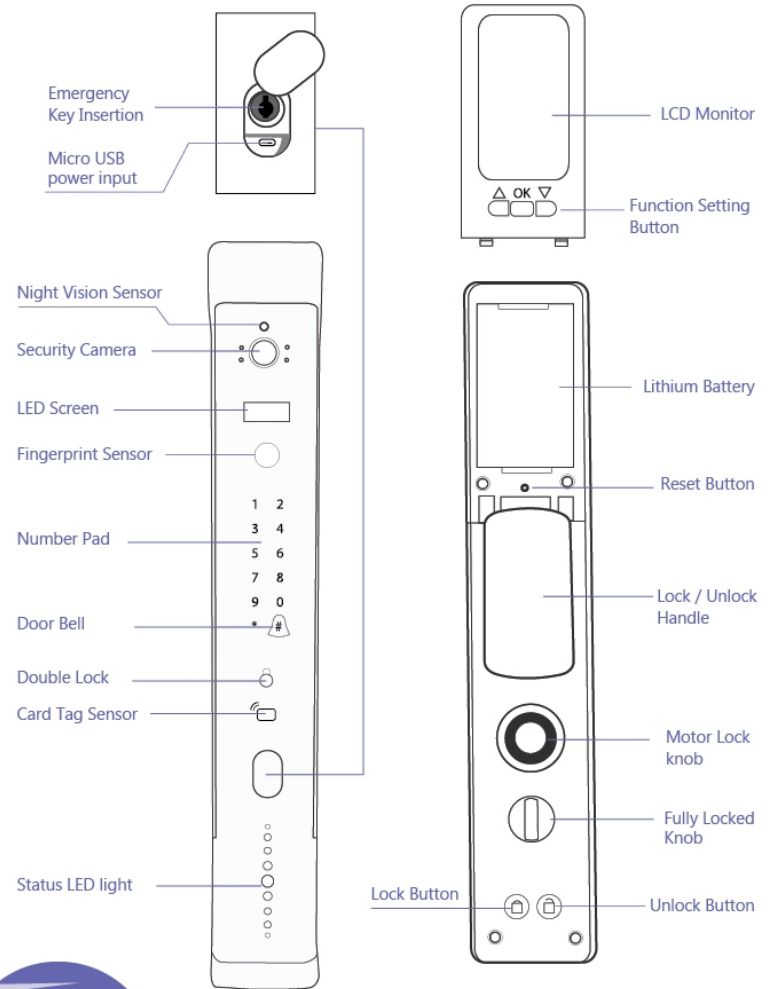
Smart Lock Structure Diagram



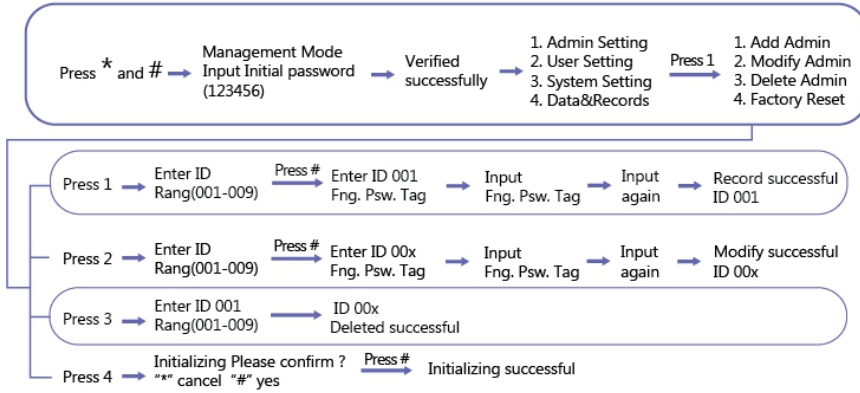
Name	Quantity
key	2
Outer body	1
Lock cylinder	1
Silicone pad	2
Back plate	1
Inner body	1
Battery cover	1

Name	Quantity
Mortise	1
3/4" Screw	4
1 3/4" Screw	2
Lithium battery	1
Tag Card	2
Square iron rod	1
USB data cable	1

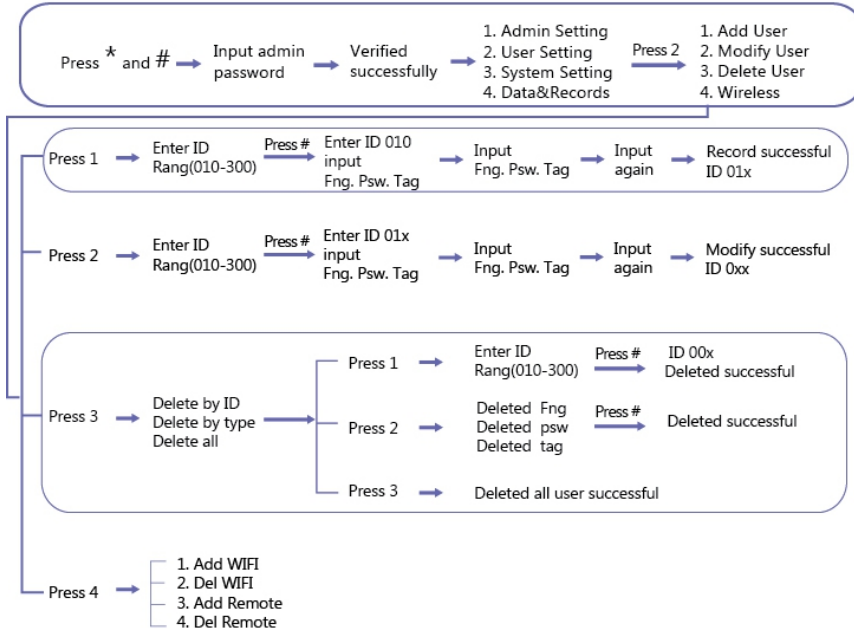
Smart Lock Function Introduction



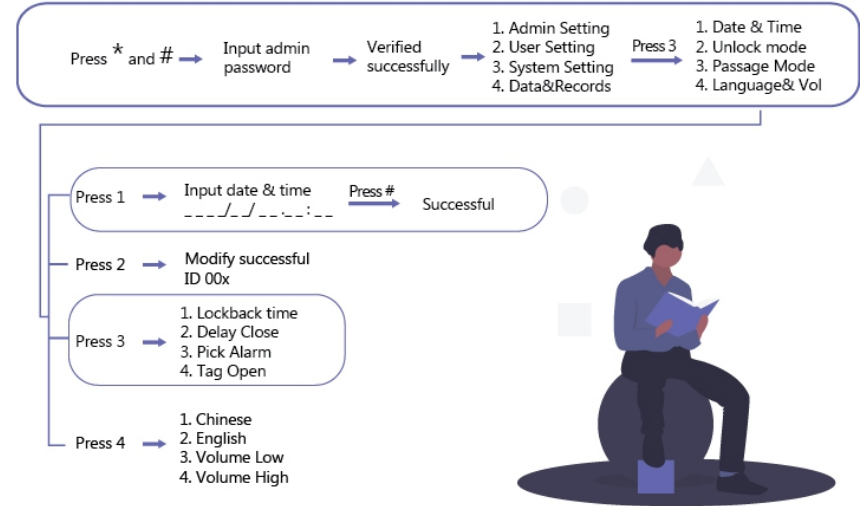
Administrator Settings



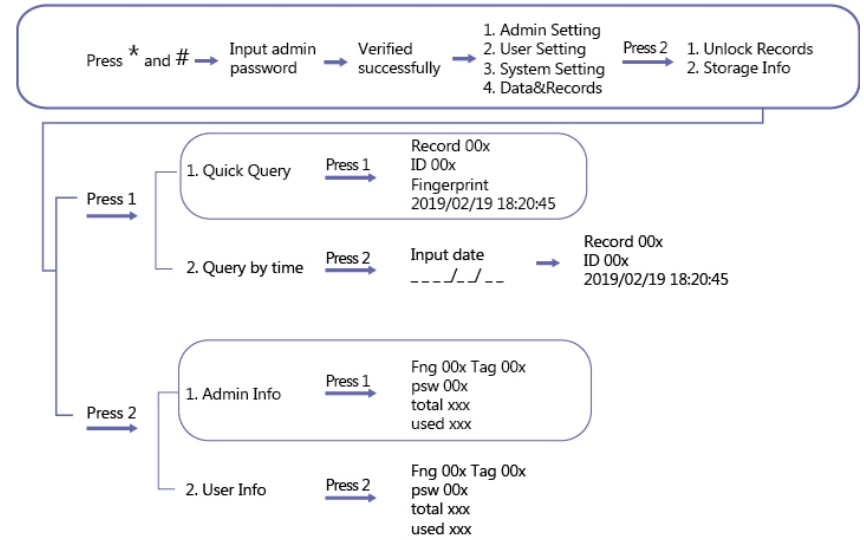
User Settings



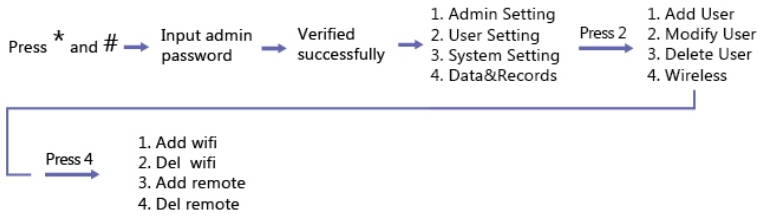
System Settings



Data and Records

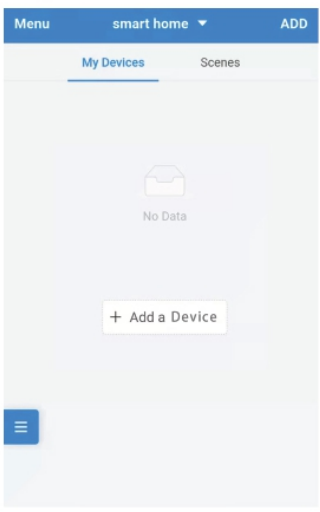


Add Wifi

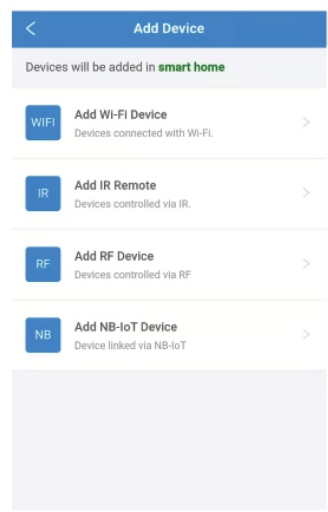


1.Download " Usmart Go"  from Android Market or Apple Store

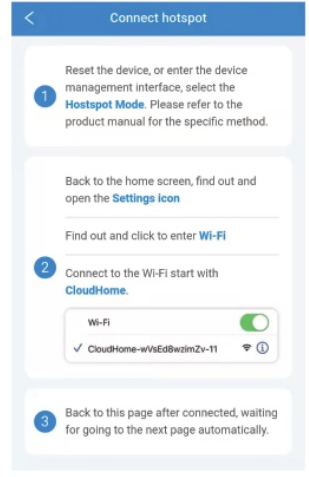
2.Register the USMART GO app and add a device



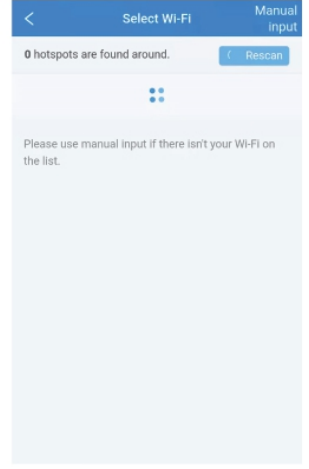
3.Select Add WIFI device



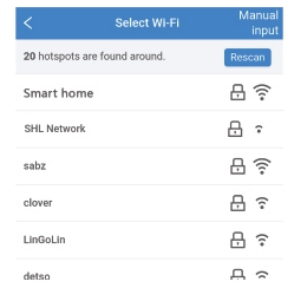
4.Select WIFI name "CloudHome-xxx"



5.Waiting to scan WIFI



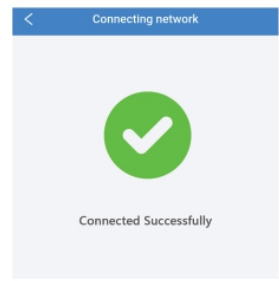
5.Select your home Wifi



6. Input your home Wifi password



Wifi connected



Daily Maintenance



1. Daily maintenance of smart door locks

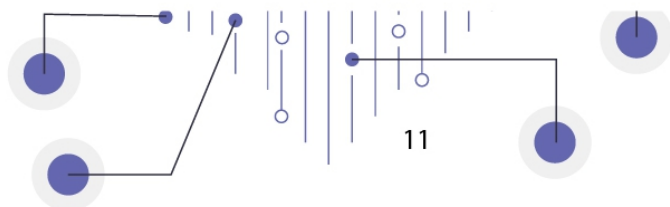
The surface of the door lock needs regular daily maintenance to keep the door lock as clean as new. Use a soft and clean dry cloth to wipe the surface. Do not clean with water, alcohol or acid chemicals. Regularly ask professionals to fill the movable parts of the door lock with lubricating oil and replace the parts with serious wear and tear.

2. USB emergency power supply

When the door lock power supply is low and the lock cannot be unlocked, you can use an external emergency power supply to unlock the lock. Note that after unlocking, please remove the battery for charging as soon as possible (USB emergency power is only for emergency use, do not use the battery when it is charged)

3. Door panel deformation

If the door is deformed, it will cause too much friction when the lock tongue is inserted into the buckle plate, and it cannot be fully extended, or even cannot be ejected. At this time, adjust the position of the buckle plate.



Product warranty & Service

1 year warranty plan

The product has passed the professional test, such as the use problem caused by the product quality problem during use, it is within the scope of the warranty, including electronic components, metal accessories, plastic fragile accessories, and lithium battery.

The labor costs incurred during the repair process are not covered by the warranty !

The following conditions are out of warranty

1. Failure and damage caused by unapproved installation
2. Failure and damage caused by improper operation and improper repair by customer
3. Failure and damage caused by transportation, moving, and falling after purchase
4. Failure and damage caused by high temperature and liquid
5. Damage caused by using unapproved power supply

CATIVE has the final interpretation right

